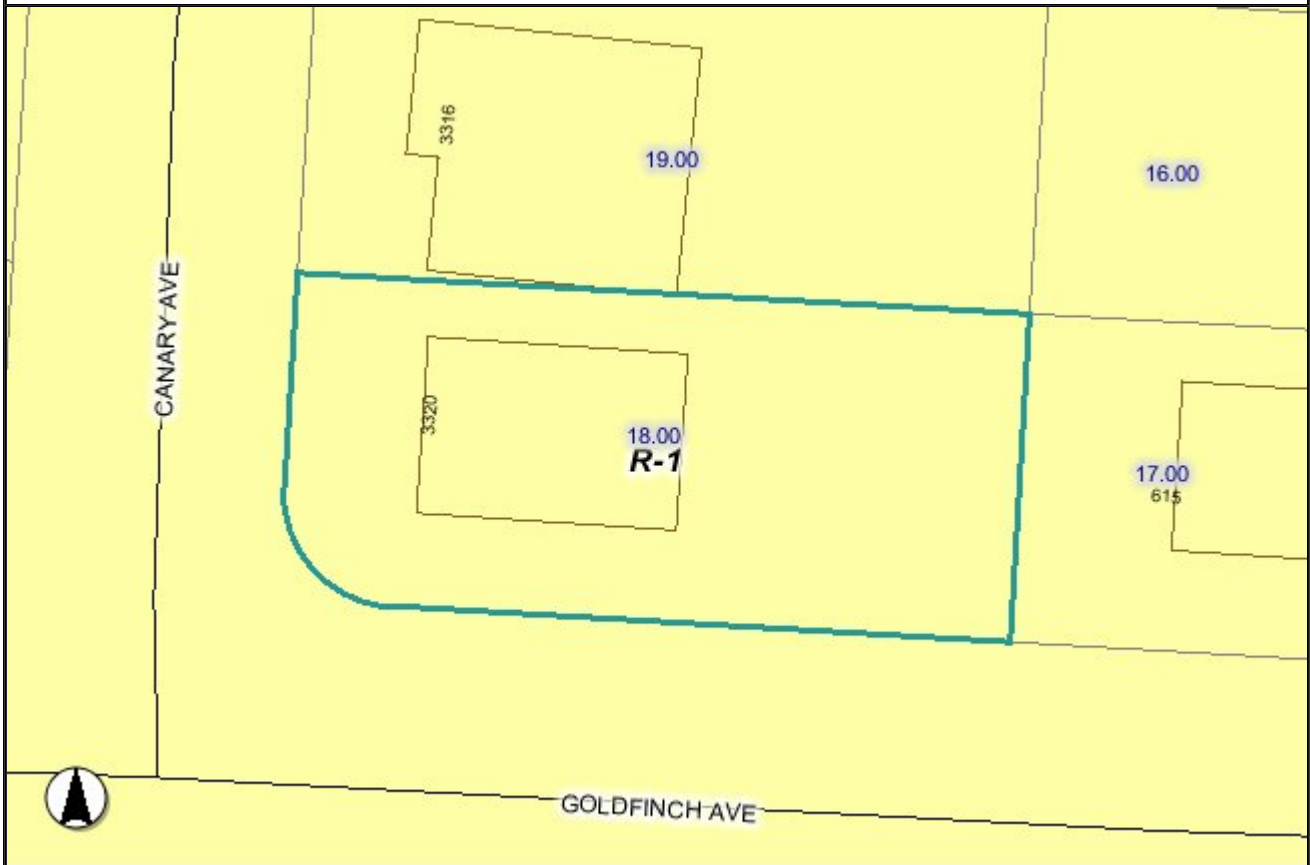


KGIS - Knoxville, Knox County, K.U.B. Geographic Information System



© KGIS 2010 38.00

0 33ft

Legend

Selected Features	Neighborhood Conservation	Water Bodies
Local Roads	Technology	Subdivisions
Collectors	Knox County Zoning	Knoxville City Boundary
Arterials	Agricultural and Estate	Farragut Boundary
PAPER	Business and Technology Park	Knoxville County Boundary
CLOSED	Neighborhood Commercial	
Other	Central Business District	
Expressways	Commercial	
Interstate Shield	PLANNED COMMERCIAL	
Interstates	Floodway	
Railroads	HISTORIC OVERLAY	
Buildings	Industrial	
Parcels	Light Industrial	
MPC Flood Fringe	Office	
Zoning Boundary	Open Space	
Zoning Overlay	Planned Residential	
Downtown Design	Low Density Residential	
Flood Zone	Multifamily Residential	
Infill House	No Zone or Transition	
Historic (cont)	FORM DISTRICT	
	TRADITIONAL NEIGHBORHOOD DEVELOPMENT AND TOWN CENTER	

Disclaimer.KGIS makes no representation or warranty as to the accuracy of this map and its information nor to its fitness for use. Any user of this map

product accepts the same AS IS, WITH ALL FAULTS, and assumes all responsibility for the use thereof, and further covenants and agrees to hold KGIS harmless from and any damage, loss, or liability arising from any use of the map product. Independent verification of all information contained on this map should be obtained by any user.

Proprietary Information. The map products and databases on this Web Site have been copyrighted by the KGIS Policy Board. The KGIS Policy Board hereby reserves all rights thereto, and no portion of the products or databases on this Web Site may be reproduced in any form or by any means without the express written authorization of the KGIS Policy Board or its authorized agents.

NOTE: These maps show zoning boundaries adopted by the Knox County Board of Commissioners on April 17, 1979 and the Knoxville City Council on August 19, 1980, and subsequently amended. Official maps are available for inspection in the Metropolitan Planning Commission offices. The zoning maps are amended frequently through action of the City Council and County Commission. Therefore, recent zoning changes that have been approved by the City Council or County Commission may not be reflected here. Verify all zoning with the Knoxville-Knox County Metropolitan Planning Commission staff at (865) 215-2500.