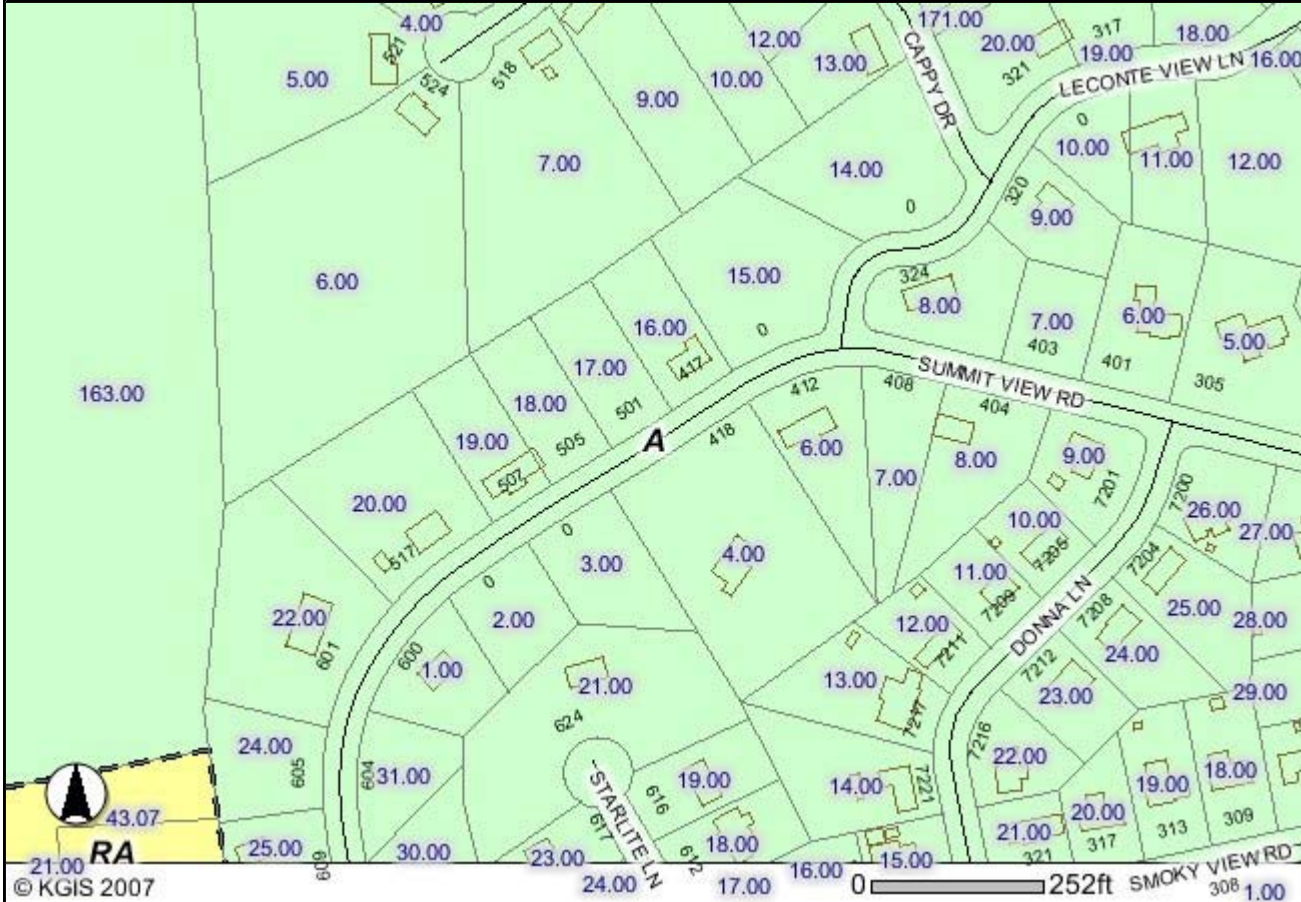


KGIS - Knoxville, Knox County, K.U.B. Geographic Information System



Legend

	Local Roads		Historic		No Zone or Transition	
	Collectors		Neighborhood Conservation		South Waterfront	
	Arterials		Technology		Traditional Neighborhood	
	PAPER	<b>Knox County Zoning</b>				Water Bodies
	CLOSED		Agricultural and Estate		Subdivisions	
	Other		Business and Technology Park		Knoxville City Boundary	
	Expressways		Neighborhood Commercial		Farragut Boundary	
	Interstate Shield		Central Business District		Knox County Boundary	
	Interstates		Commercial			
	Railroads		Floodway			
	Buildings		Historic			
	Parcels		Industrial			
	MPC Flood Fringe		Light Industrial			
	Zoning Boundary		Office			
	Zoning Overlay		Open Space			
	Flood Zone		Planned Residential			
	Infill House (cont)		Low Density Residential			
			Multifamily Residential (cont)			

Disclaimer: KGIS makes no representation or warranty as to the accuracy of this map and its information nor to its fitness for use. Any user of this map product accepts the same AS IS, WITH ALL FAULTS, and assumes all responsibility for the use thereof, and further covenants and agrees to hold KGIS

harmless from and any damage, loss, or liability arising from any use of the map product. Independent verification of all information contained on this map should be obtained by any user.

**Proprietary Information.** The map products and databases on this Web Site have been copyrighted by the KGIS Policy Board. The KGIS Policy Board hereby reserves all rights thereto, and no portion of the products or databases on this Web Site may be reproduced in any form or by any means without the express written authorization of the KGIS Policy Board or its authorized agents.

**NOTE:** These maps show zoning boundaries adopted by the Knox County Board of Commissioners on April 17, 1979 and the Knoxville City Council on August 19, 1980, and subsequently amended. Official maps are available for inspection in the Metropolitan Planning Commission offices. The zoning maps are amended frequently through action of the City Council and County Commission. Therefore, recent zoning changes that have been approved by the City Council or County Commission may not be reflected here. Verify all zoning with the Knoxville-Knox County Metropolitan Planning Commission staff at (865) 215-2500.